

Nikon

Windows XP Home Edition / Windows XP Professional

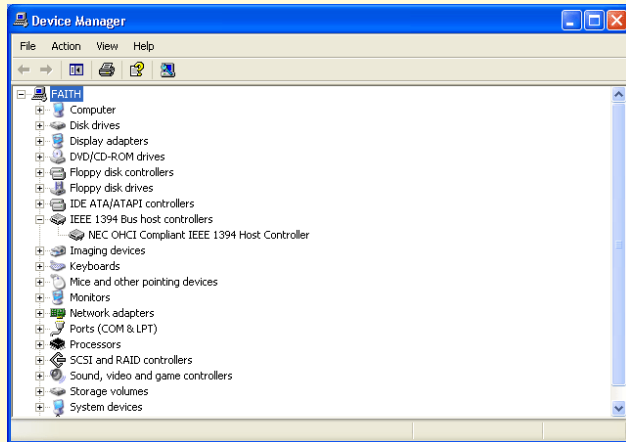
Nikon Capture 2 (Ver.2.0.2 Updater)

This manual is for those users of D1 series cameras who are running Windows XP Home Edition or Windows XP Professional, and are updating to Nikon Capture 2 (Ver. 2.0.2).

For Windows XP (Home Edition/Professional)Users

Registering the Camera under Windows XP

Before you will be able to use your D1, D1X, or D1H digital camera with Nikon Capture 2, you must complete the device registration procedure. If you have already registered the camera for use with Nikon View 4 or will not be connecting the camera to the computer, you will not need to register the camera now.



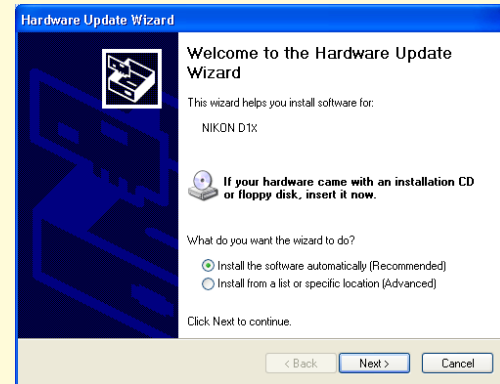
Before registering your camera, check that the OHCI-compliant IEEE 1394 interface board is correctly registered with the system. If the board is correctly registered with the system, it will be listed under “1394 Bus Host Controller”. If the “1394 Bus Host Controller” entry is not displayed, follow the instructions in the manual provided with the computer, or in the manual provided with the board, to ensure that the drivers are properly installed.

Step 1

After installing Nikon Capture ver.2.0.2, turn the camera on, make sure that the mode dial is set to PC, and then connect the camera to the computer using an IEEE 1394 cable.

Step 2

The opening dialog for the Found New Hardware Wizard will be displayed. Holding down the shift key to prevent the Welcome dialog from opening automatically, insert the Nikon Capture 2 CD into the CD-ROM drive. Select Install software automatically, and click **Browse**.

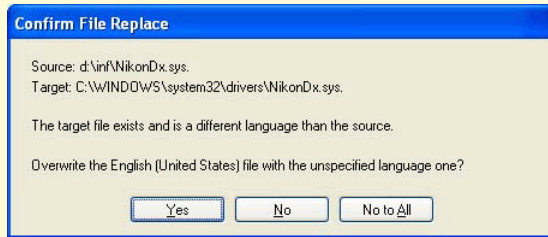


If the Welcome dialog appears when the CD is inserted in the drive, close the dialog by clicking the **Exit** button.

* Log on as the Computer Administrator to register the camera.

Step 3

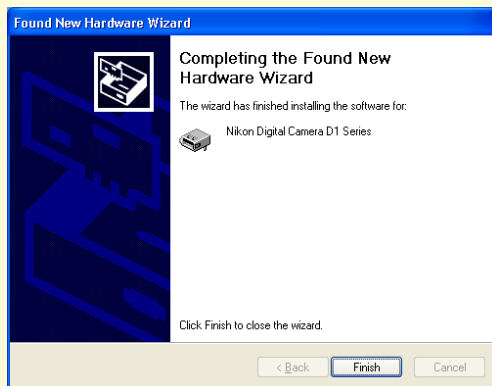
When the installation starts, the **Confirm File Replace** dialog will be displayed. Make sure you click **No**.



The required system drivers were automatically installed when you updated Nikon Capture to version 2.0.2; this means that the required drivers are already present on the hard disk. Make sure you click **No** to use these drivers.

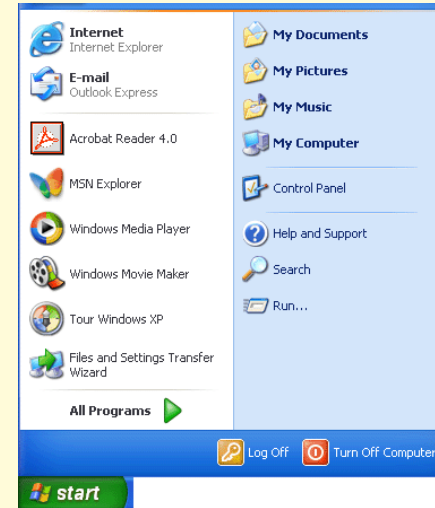
Step 4

When the installation of the drivers has finished, the dialog shown below will be displayed; click **Finish** to close the dialog box.



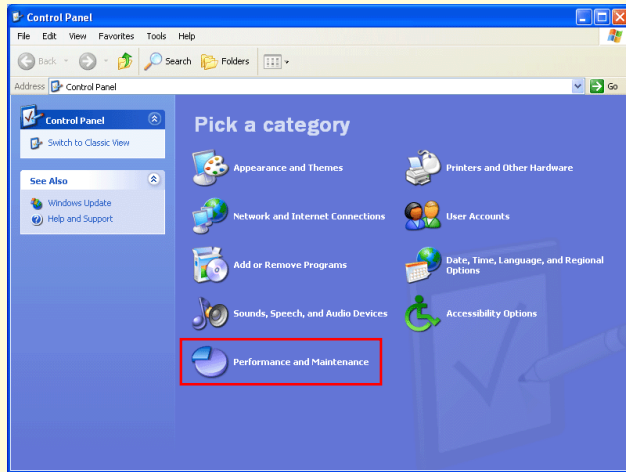
Step 5

Registration should now be complete; refer to page 41 of the Nikon Capture 2 manual (starting at Step 7) to check that the camera has been correctly registered with the system. Select **Control Panel** from the **Start** menu.



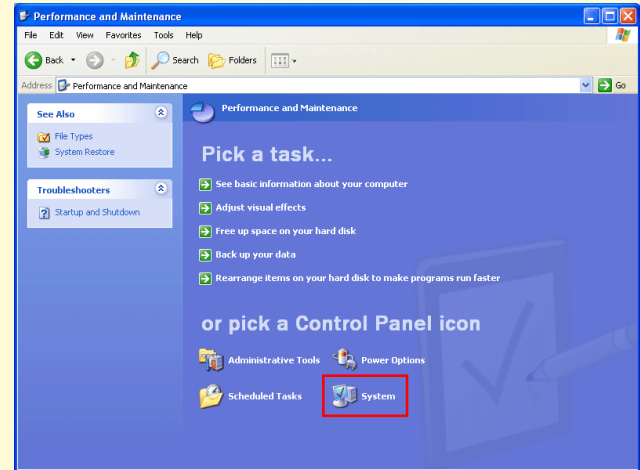
Step 6

The Control Panel window will be displayed. Click **Performance and Maintenance**.



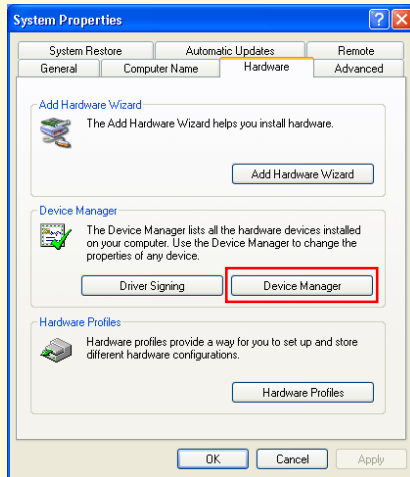
Step 7

The Performance and maintenance window will be displayed. Click **System** to open the System Properties window.



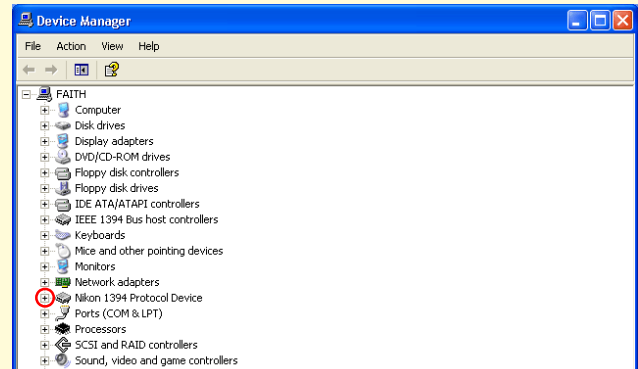
Step 8

In the System Properties window, select the Hardware tab and click the **Device Manager** button in the Device Manager section.



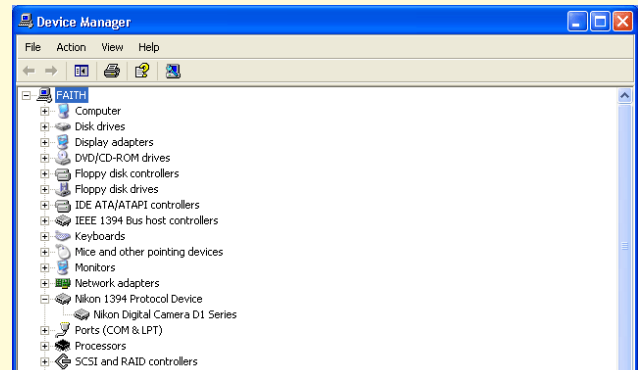
Step 9

The Device Manager window will appear. Confirm that “Nikon I 394 Protocol Device” is listed in the Device Manager, and click the “+” mark next to the listing.



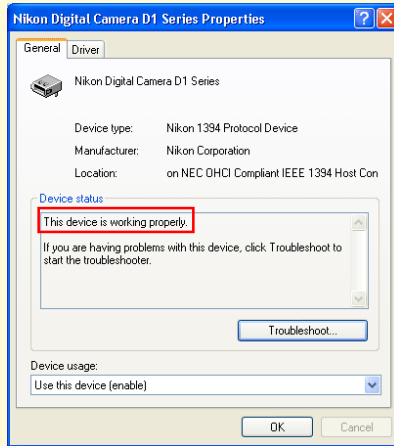
Step 10

After confirming that “Nikon Digital Camera D1 Series” is listed under “Nikon I 394 Protocol Device,” double-click the listing to open the Properties window.



Step 11

The Nikon Digital Camera D1 Series Properties dialog will be displayed. Click the General tab and confirm that “This device is working properly” appears under “Device status”. Click **OK**.



Step 12

Close the Device Manager, then click **OK** to close the System Properties window. Device registration is now complete.